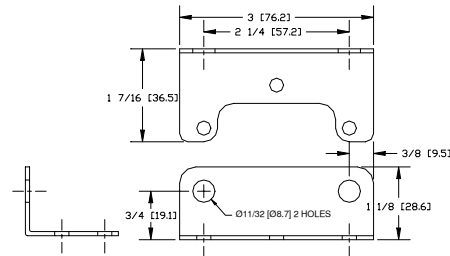


NATHAN AIRCHIME INC. (A MEMBER OF MICROPRECISION GROUP)  
1102 WINDHAM ROAD, PO BOX 96, SOUTH WINDHAM, CT 06266, USA

## MODEL PRV-10-375 PRESSURE REDUCING VALVE WITH TEMPER PROOF SETTING SCREW



MOUNTING BRACKET

- Poppet valve, balanced by using a rolling diaphragm to ensure a constant output pressure even during wide supply pressure variations.
- Designed for applications that requires high capacity with accurate process control. No field adjustment required.
- Tamper proof lock screw to prevent accidental pressure adjustment.
- Mount any position without effecting its operation. Can be wall mounted or panel mounted.
- Rugged solid aluminum construction for durability and reliability.

Supply pressure:	35 bar [500 psig] maximum
Pressure range:	0.1 to 4 bar [1-60 psig]
Flow capacity:	19 L/Sec [40 SCFM] at 7 bar [100 psig] and 1.5 bar [20 psig] set point
Supply pressure effect:	Less than 0.007 bar [0.1 psig] for 7 bar [100 psig] change in supply pressure
Inlet port:	3/8"-19 BSP
Outlet port:	3/8"-19 BSP
Gage ports:	1/4"NPT (inlet and outlet), plugged
Operating Temperature:	-40°C to +93°C [-40°F to +200°F] on dry air
Degree of Protection:	IP 44
Basic Dimensions:	166 x 76mm [6.5x3"]
Net Weight:	0.7 kg [1.6 lbs]

***DISTINCTION • SAFETY • RELIABILITY***